



scran news

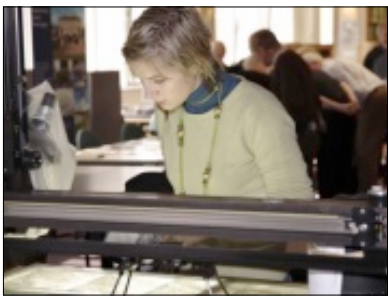


Autumn 2010

Welcome to our new look newsletter

You might have noticed some changes to our newsletter! It's a little more colourful than our previous communications and there are a few more pictures, too. Let us know what you think at andrew.james@scran.ac.uk.

Scran is part of RCAHMS



Since Autumn 2008, Scran has been part of RCAHMS (the Royal Commission on the Ancient and Historical Monuments of Scotland).

Whenever our staff travel up and down the country we often get asked a couple of questions. The first is "What does RCAHMS do?" We'll answer this first one before we turn to the second.

RCAHMS was established by royal decree just over a century ago, and was charged with measuring, surveying and recording the built environment of Scotland, from ancient stone circles to 20th century modernist structures. To do this, it has a dedicated staff of photographers, computer renderers, artists, illustrators, surveyors, archaeologists and architectural historians on staff. It doesn't pass judgement on the quality of the buildings it surveys, it doesn't offer advice and it doesn't manage any properties, and this is what separates it from Historic Scotland and the National

Trust for Scotland, two organisations with which it is occasionally confused.

It makes its data publicly available (to architects, surveyors, researchers, academics, students and archaeologists, as well as to the general enthusiast), and anyone can visit its Edinburgh headquarters or peruse its findings over the internet. It also publishes a wide range of materials, from academic

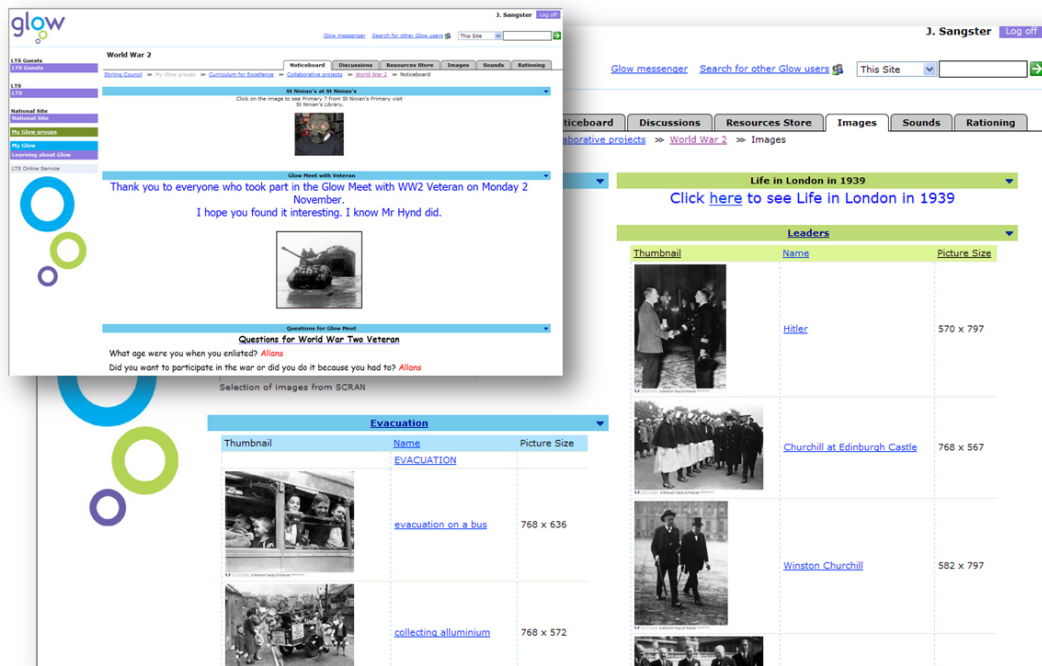


treatises to best-selling photography books.

All of which leads to the second question we get asked when out

and about: "What can RCAHMS do for my classroom?" As well as being able to search its own archives at <http://canmore.rcahms.gov.uk>, teachers and learners can see some of RCAHMS' recent work at www.scotlandspplaces.gov.uk. In addition, nearly 30,000 of RCAHMS' terrific photographs and documents are available on Scran itself.

Case studies



Scran on Glow

Glow, the Scottish schools intranet, and Scran complement each other perfectly. You can log in to Scran using your Glow user name and password (look for the “Log in using Glow” link on the right of the Scran home page) and you can use Glow to store and distribute materials downloaded from Scran without fear of infringing your license terms. This is because Glow is a secure, password-

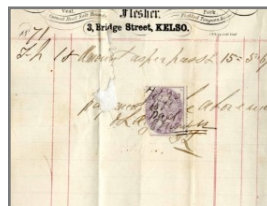


protected intranet rather than an open part of the internet, and all Glow users (i.e. Scottish teachers and pupils) have full access to Scran anyway!

Some Glow groups have been doing just that. One in Stirling is making great use of Scran resources in their World War Two studies as you can see above. We’re just in the process of setting up our own Scran Glow group where we’ll post news and resources. Look for it on Glow in the coming weeks.

Hawick Heritage Hub

We recently linked up with Hawick Heritage Hub and local schools in the Borders to collaborate on the *Living Rooms* project. The project encourages participating schoolchildren to engage with their local community and the built heritage of their towns. For exploring a sense of place, Scran is the perfect resource. Teachers and pupils can find images of their town or village, vernacular and



contemporary architecture as well as maps, both ancient and modern. There is also aerial photography, imagery of people and industry, interiors of stately homes,

Borders heritage materials, archaeology records, fine art landscapes, film clips of gala days, local oral histories and even more for classroom research.

The project has also resulted in some new records for Scran, as the Heritage Hub has kindly contributed new materials to our collection. See them at www.scran.ac.uk/s/005-000-002-135-C.

Scottish Parliament



New records get you up close and personal with MSPs

Scran is very pleased to have received new records from the Scottish Parliament to complement our existing materials on Holyrood.

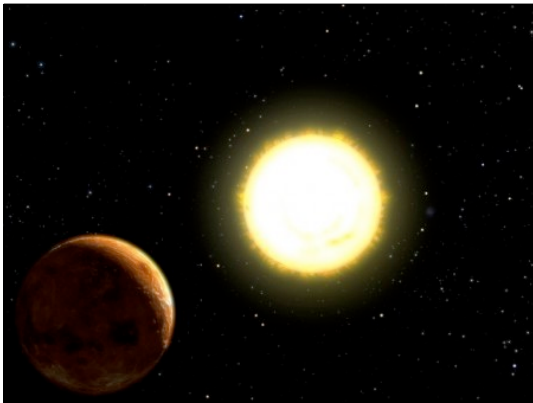
Included in this update are images of many current MSPs from across the political spectrum, including recent pictures of Alex Salmond, Nicola Sturgeon, Iain Gray, Gavin Brown, Jim Hume and Patrick Harvie. Nearly 300 images have been added to our collection, and these cover all aspects of the life of Parliament: if you need images of MSPs debating, First Minister's Question Time, meetings with heads of state, or seminars with business leaders, Scran can provide all of these for your classroom. Equally, there are superb images of the controversial building itself, designed by the British firm RMJM and Catalan architect Enric Miralles, taking in the gardens, the interior spaces and the complex exterior decoration.

This new material will complement any classroom work on citizenship or politics, and we expect it to be a popular addition to our online resources. Our thanks go to volunteer Chris Anderson for captioning them.

To see all our Parliamentary records, go to www.scran.ac.uk/s/Scottish+Parliament

More new additions

We're continually adding new collections of images to Scran's already extensive database. And remember, all our materials are rights-cleared, so if you want to reproduce them for use in your classroom or library, go right ahead.



NASA

NASA has again kindly allowed Scran to use its images. We already host many images relating to the Apollo missions and the Space Shuttle program, and these new additions to our collection feature images of the planets in the solar system, pictures of the earth from space, artists' impressions of distant moons and some three-dimensional imagery too. Find all our NASA-contributed materials at www.scran.ac.uk/s/NASA



Banksy

Bristol's mysterious, publicity-shy graffiti artist has always provoked extreme reactions. Some (notably property owners) see him as an anti-social vandal, while his legion of fans see him as a cultural provocateur, slaughtering sacred cows, highlighting societal absurdities and pointing up the vagaries of the art market. Whatever your view, you can now find rights-cleared examples of Banksy's work on Scran for use in your art and design projects.

To see them, go to www.scran.ac.uk/s/Banksy



Treasured Places

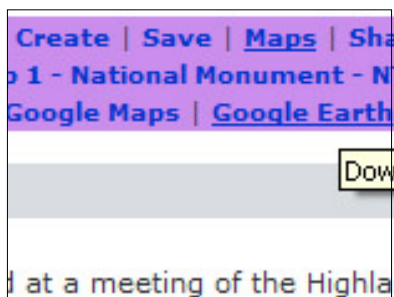
The Treasured Places exhibition, which visited various galleries and museums in 2008 and 2009, highlighted Scotland's best-loved buildings, as voted by the public. The top ten included obvious favourites such as Glasgow's School of Art, and the Falkirk Wheel, as well as more unusual choices such as Cumbernauld town centre. Now you can download ten short films created to accompany this exhibition from Scran. Each looks at one of the top ten Treasured Places, and provides context for each as well as an in-depth look at its architecture. Find the films (and a series of Pathfinder Packs accompanying the exhibition) at www.scran.ac.uk/s/Treasured+Places

Maps on Scran

They're not just for geography teachers...



Many of our records have a Maps button underneath them. This means that they have geotags appended to them, which also means that you can view their whereabouts on Google Maps or Google Earth, as well as Scran's own maps, simply



by clicking on the links that appear underneath the Maps button.

Using the maps that Scran links to can be a fantastic way to enhance lessons, and not just for geography teachers. Linking to Scran's own mapping system can be a great introduction to navigation skills, the points of the compass and concepts such as "bird's-eye views".

In addition, Scran's own mapping system means that you can pinpoint an object's location, and then search for other objects that may be nearby. This can be good preparation for any field trips you may be planning! If you're going to the V&A, for example, use Scran's maps to locate other areas of interest in the vicinity.

Many landmarks on Google Earth are starting to appear in 3-dimensional form (see above for example). They're "built" by volunteer computer users using tools such as Google SketchUp, and they can really complement classroom work. Studying Charles Rennie Mackintosh's work on Scran, for example, and then clicking the Maps link under the Scotland Street School records, will take you to a fantastic 3-d rendering of the building itself. You can zoom in and out and "fly" around the 3-d version of this Mackintosh masterpiece. Why not try it out?

More news

FE/HE CPD opportunity

Scran has recently been working closely with the Joint Information Systems Committee (JISC) to develop our service to FE and HE institutions up and down the UK. Over the summer we took part in JISC regional exhibitions and events in the North West of England, the East of England, Yorkshire and Humber, East Midlands and the South West of England.

The logo for JISC (Joint Information Systems Committee) is displayed in a large, bold, orange font.

We'll also be participating in a free JISC training day in Glasgow on Thursday 2nd December. Aimed at tutors and librarians in the FE/HE sector, the 2 1/2 hour session is free and includes lunch. It will cover how to search for and reuse Scran content, how to use our various online tools and also how you can contribute your own materials to the site.

You can pre-register for this free CPD event at <http://www.rsc-sw-scotland.ac.uk/events.htm>

Product Design competition

Could you design for future Olympians? Scran and the Surgeons' Hall Museum at Edinburgh's Royal College of Surgeons are collaborating as part of the latter's upcoming exhibition *Human Race: inside the science of sports medicine*.

The museum is inviting Art and Design students from across Scotland to enter their competition to design a sports-related product to feature in a major new exhibition in 2012. If you think you have an idea that could become part of Scotland's rich

heritage in sporting innovation and design they would be delighted to hear from you.

The competition is open to Art and Design and Product Design (Higher and Advanced Higher) students in full-time education in Scotland.

Each entry must include a rationale (written submission) and PDF or JPEG presentation of design. Students are encouraged to enter work they are already doing as part of their qualifications. The competition is also open to work produced outside of school or college.

All aspects of design that constitutes a product are welcome. They are looking for innovation and practical application using the core themes of the Human Race exhibition as a starting point.

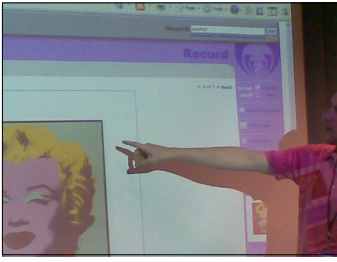
The competition will give you a real opportunity of showcasing your work in a competitive environment where it will be judged by professionals and potential future employers.



The winning and short-listed entries will feature as key exhibits in the Human Race

touring exhibition and will be on show to local, national and international audiences throughout 2012. The winner plus one will also be VIP guests at the exhibition opening event in Edinburgh in August 2012. The VIP treatment includes bed & breakfast and dinner at 10 Hill Place, Edinburgh <http://www.tenhillplace.com>

The competition is open from 1st September 2010 to 8th April 2011. For full competition details visit the Human Race website at <http://www.scotlandandmedicinehumanrace.com>



Free demonstrations, workshops and training

Scran offers training opportunities for teachers, librarians, trainers, managers and students. Most of these are face-to-face and last for about 90 minutes.

We are included in the General Teaching Council of Scotland's National Register of approved CPD providers. These sessions are free of charge and can be arranged to suit your needs.

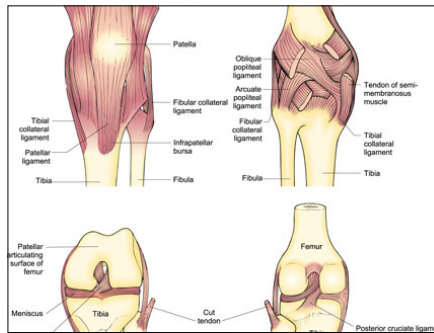
For bookings and information, contact our Schools Education Officers, Andrew James or Jackie Sangster on 0131 651 6816/6817 andrew.james@rcahms.gov.uk / jackie.sangster@rcahms.gov.uk, or our Lifelong Learning Officer Helen Foster on 0131 651 6815 helen.foster@rcahms.gov.uk. You can also find out more information about the types of training we offer on the Scran website at www.scran.ac.uk/help/training.php

Pick of the pictures



Scran has hundreds of thousands of images in its database (as well as videos, sound clips and text), and occasionally we come across some that are intriguing, unusual or simply downright bizarre. Helen Foster, our Lifelong Learning Officer, has chosen this newsletter's "Pick of the Pictures". It's a fascinating glimpse at a bygone era from the archives of the Scotsman newspaper, and it features some Glamorous Grannies at the Pilton May Fair in 1966. Records like this are a great way of kick-starting reminiscence work, creative writing and inter-generational projects, as well as enhancing history topics. Find this pic at www.scran.ac.uk/s/grannies+Pilton

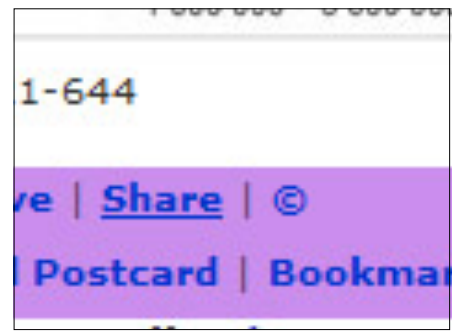
Subject focus: science



Much of Scran's material has been licensed to us by museums, galleries and archives, so it goes without saying that we are very useful to art & design and history teachers in particular. However, we also host loads of resources that are useful to those teaching languages, geography, RE, PSHE, PE and more.

We also have a wealth of material to assist science teachers, from images of microbes to line drawings of bunsen burners. Much of our science material (including the illustration above) was licensed to us by Oxford Designer & Illustrators, and you can find it at www.scran.ac.uk/s/Oxford+illustrators.

Copying and sharing



More and more teachers are incorporating social networking into their classroom practice, and Scran offers a number of easy ways to do this. The "Share" button underneath most Scran records allows you to e-mail a link to a colleague, send a postcard, upload a thumbnail image into a blog or send a link to social bookmarking sites like Digg, Delicious and Reddit or even to Facebook.

In your Stuff account, you can copy records and your Create and Multicreate artefacts to anyone whose Stuff username you know. Why not use Stuff to share your worksheets, posters, flashcards, booklets and other Creations with your colleagues? They'll probably share theirs with you!



Scran at the Scottish Learning Festival

Once again, we will be taking a stand (no.320) at this year's Scottish Learning Festival, which takes place at Glasgow's SECC on the Wednesday and Thursday 22nd and 23rd September. We'll be unveiling some new features on the site, including the latest version of Contribute, our uploading interface that allows you to contribute your materials to Scran. If you're planning to come, please stop by and say hello.

<http://www.ltscotland.org.uk/slf>

Teacher-at-home access

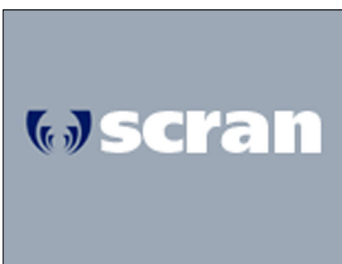
If you're a teacher, you have easy access to Scran from your school, but did you know you can access Scran at home, in the library, in the cafe or anywhere where there's an internet connection? Accessing Scran outside of the school makes preparing materials easy. We recently signed up our 5,000th teacher-at-home, which means 1 in 10 Scottish teachers can access the site from the comfort of their own home. If you haven't yet taken advantage of FREE home access to Scran for GTC-registered teachers, go to www.scran.ac.uk/shop/teacher.php and fill out the online form.

Easy access from schools

95% of schools now have IP authenticated access. This means that when you or your pupils visit Scran from school premises, our site should detect where you're logging in from and grant you automatic access with no need to remember a user name or password. If, when you log on to Scran from your school, you don't see a drop-down menu of schools in your local authority, PLEASE LET US KNOW by either phoning (0131 662 1456) or emailing (andrew.james@rcahms.gov.uk). You can help us even more by sending us your school's IP address when you email. To find this out, simply go to www.scran.ac.uk/ipcheck.php and you'll see a phrase of letters and numbers. Copy and paste this in an email to us and we should be able to sort out your automatic access quickly and easily.

Scribble for blogging

More and more classrooms are using blogging as a method of communicating, and more and more educationalists are advocating social networking as a way of engaging learners. If you've ever wanted to start a class blog (or even a personal one), there's a safe and easy way to get started at Scran Scribble. You use your Stuff account name and password to log in, so you can get blogging straight away. Your class can share its thoughts with other Scribble users, or even create "gated" communities, so you could restrict access to your class's online writing. Find out more, or dive straight in, at <http://scribble.scran.ac.uk>



Contact us

Schools, FE/HE: jackie.sangster@rcahms.gov.uk 0131 651 6817

Schools, FE/HE: andrew.james@rcahms.gov.uk 0131 651 6816

Libraries, lifelong learning: helen.foster@rcahms.gov.uk 0131 651 6815

General enquiries: 0131 662 1456 www.scran.ac.uk